

MICROSOFT® APPLICATION SOLUTIONS**Microsoft Office SharePoint 2007****CUSTOMER PROFILE**

The Stewart Milne group comprises Stewart Milne Homes, Timber Systems, Construction and Commercial Developments. Stewart Milne Homes was founded in Aberdeen in 1975 and is one of the UK's leading privately owned house builders.

Stewart Milne Timber Systems is the UK's leading supplier of timber systems solutions to the house building and commercial sectors, and was also established in 1975.

Construction deliver commercial and residential projects to the public and private sectors, and have extensive expertise in business sectors such as healthcare, office accommodation, leisure facilities, commercial buildings and residential housing.

Portal project proves positive

"On face value this may have looked like a SharePoint project but in reality it was much more, we wanted a supplier that would support us in what we were doing and also develop an ongoing relationship with us. I feel the way in which Waterstons managed this project was exemplary."

Maggie Scullion, Director of Business Technology,
Stewart Milne Group

THE CHALLENGE

As a rapidly growing organisation, the Stewart Milne group were increasingly facing issues in the areas of document management and control, and efficiency of working as the result of paper-based working practices.

The group needed a solution which would ensure:

- The suppliers had access to the correct versions of specifications, so the right materials are delivered to site.
- The correct drawings were made available to builders, ensuring accurate building work.
- Drawings could be easily tracked and the risk of loss reduced. (Drawings were traditionally 'red-lined' by third parties and sent back as hard copies in the post).
- Drawings and documents could be easily found.

Stewart Milne required a solution incorporating document management and control that would allow internal and third party users to access the latest documents, and to "redline" documents electronically.

IMPLEMENTATION

- Microsoft Office SharePoint 2007 (MOSS) was selected as the platform for the solution, to provide a portal for both internal and external users.
- Waterstons spent time gathering requirements from a number of users from across the Stewart Milne group of companies to give a broad range of input.
- A number of options and potential software packages were considered to enable documents and drawings to be electronically

red-lined. The solution that was found to best meet the Stewart Milne's needs in terms of functionality and cost was Brava! Enterprise for SharePoint, which was fully integrated into the SharePoint platform.

- A project template was designed with the required document libraries, workflow and security, and a wizard was developed to enable new projects and the relevant security groups to be created.
- SharePoint was customised to mirror the "Look and Feel" and branding of Stewart Milne's website.

POTENTIAL REALISED

As a result of implementing and customising this portal solution, Stewart Milne has experienced the following benefits:

- The latest versions of documents are always visible, reducing confusion, errors and time in locating the correct document. The well-structured project sub-sites also enable documents to be readily found.
- The project template has hugely simplified SharePoint administration for Stewart Milne compared with manually setting up the projects.
- External users can log into the system, view the latest documents and red-line drawings and documents. This saves time in sending hard copies of documents by post, greatly improves traceability and saves time in storing and then finding hard copies.
- Security within SharePoint ensures that the correct groups of people have access to the correct documents. For example, third parties are not able to view all internal documentation.



More Information

MICROSOFT OFFICE SHAREPOINT 2007

MOSS 2007 is a Communication and Collaboration platform that offers the following:

- Data can be shared across sites and with selected 3rd parties.
- Fully configurable to the client's requirements, including customization of the "Look and Feel".
- Document management and control functionality (version control and version history).
- Workflow is provided out-of-the-box – in this case Approval workflow was used to approve certain categories of document.
- Complex security can be defined to give particular groups access to specific components of the site or site functionality.
- Wizards can be defined to automatically create a new sub-area.

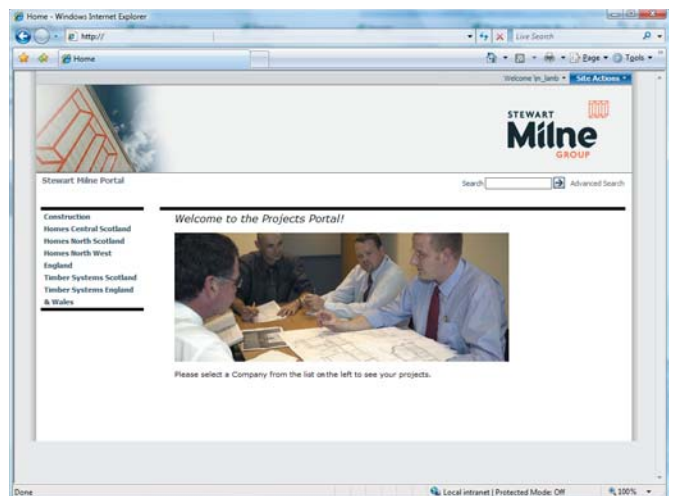
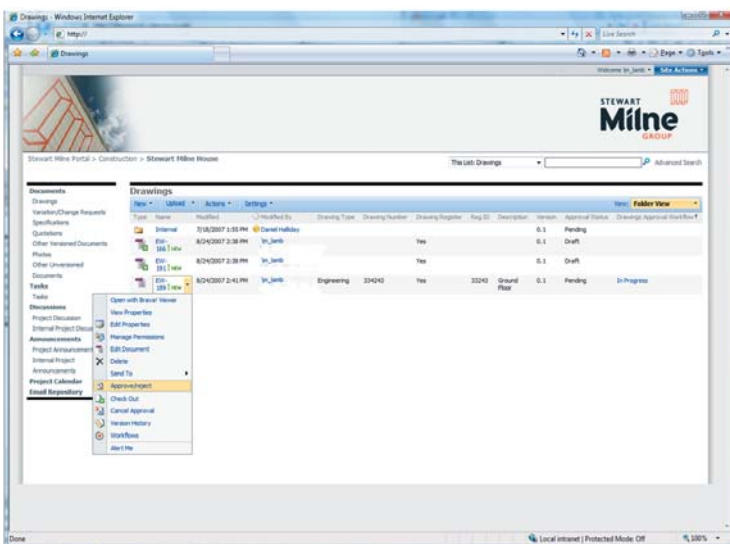
PROJECT MANAGEMENT

The project was managed such that key Stewart Milne stakeholders were regularly informed of progress and issues. A preliminary demonstration was performed part-way through the project to ensure that Waterstons were on target for meeting expectations regarding the project and so that changes could be incorporated at an early stage.

"More and more the building industry is coming round to seeing that technology can add value to their operations by helping companies become innovative and provide continuous improvement.

Waterstons have helped us provide a better service to both internal and external customers by allowing us to be more responsive to their requirements. "

Maggie Scullion, Director of Business Technology,
Stewart Milne Group



Users can share documents which have been redlined and see the history of every version of the document.

Users work through a single portal rather than in a mixture of applications.